



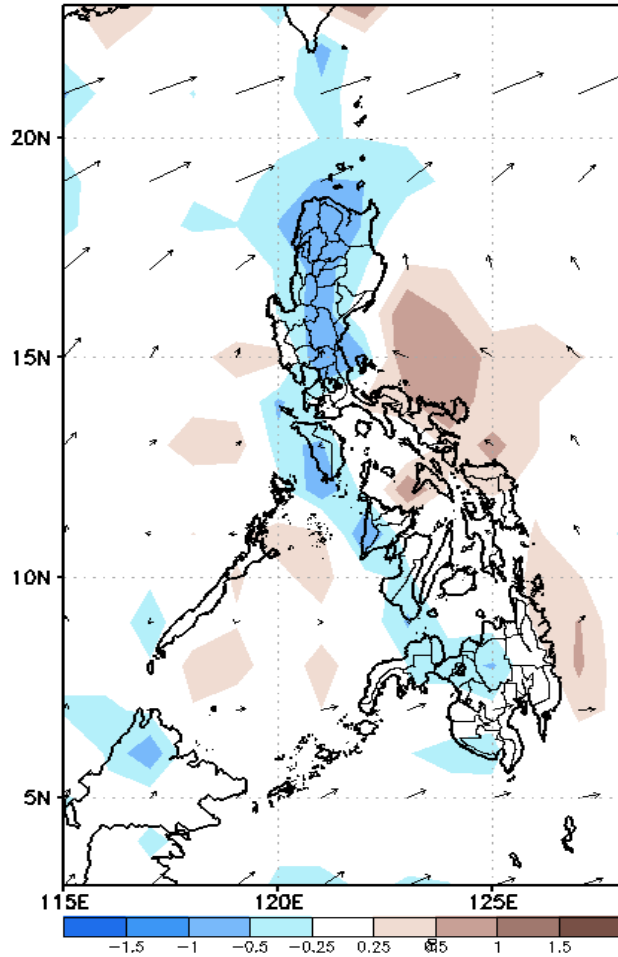
# Week 1 & Week 2 Forecast for the Philippines using GEFS Model



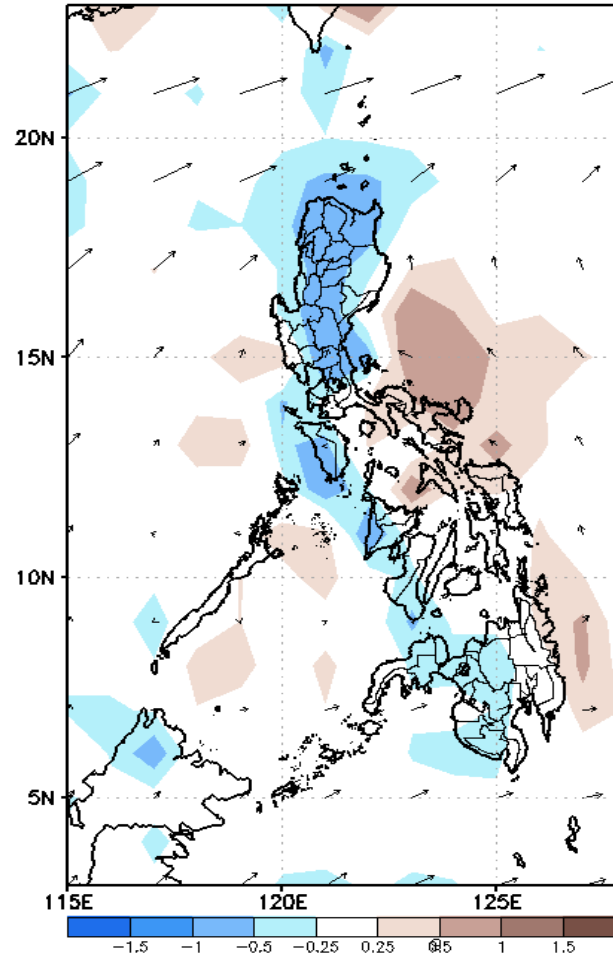
# GEFS Week-1 Forecasts: Divergence & Wind Anomaly

## Week 1: February 4-10, 2021

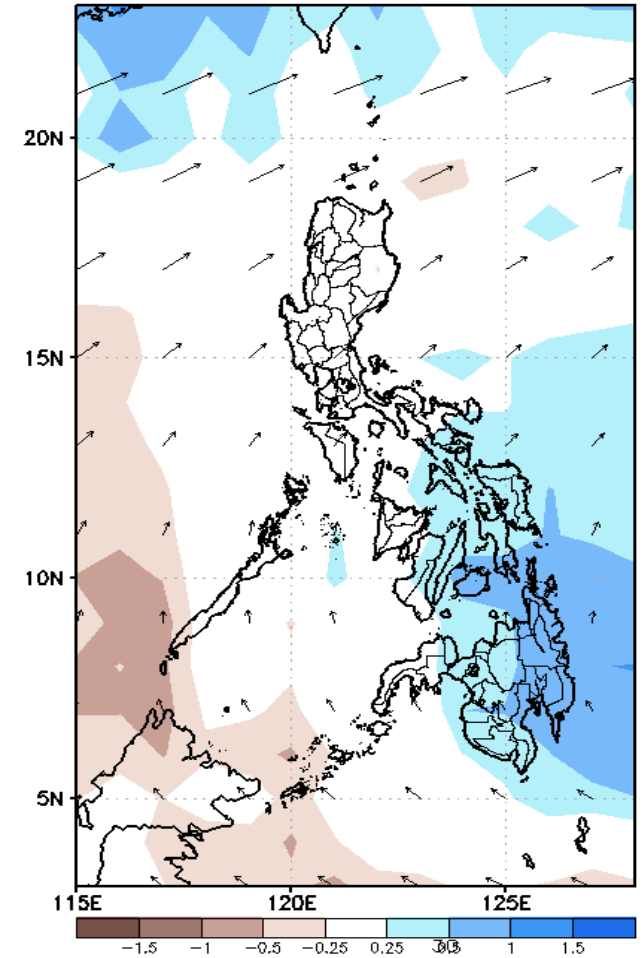
GEFS Week-1 850-hPa Divergence and Wind Anomoc  
Valid: 20210204 - 20210210



GEFS Week-1 700-hPa Divergence and Wind Anomoc  
Valid: 20210204 - 20210210



GEFS Week-1 200-hPa Divergence and Wind Anomoc  
Valid: 20210204 - 20210210

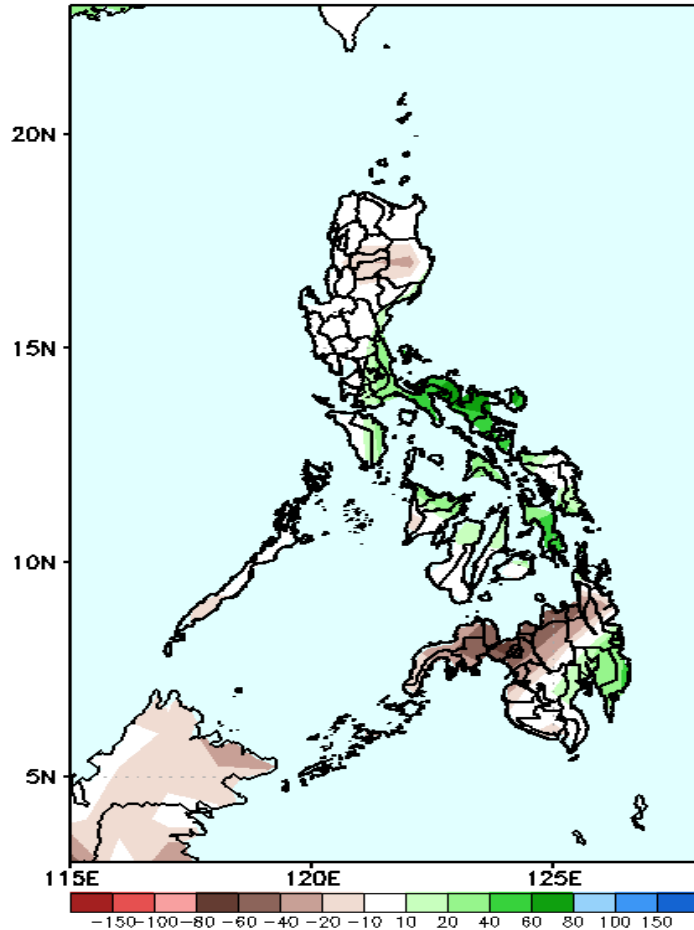


Upper and low level Divergence suggest likelihood of precipitation in most parts of the country except La Union, Pangasinan and most parts of Southern Luzon. Northeast Monsoon affecting most parts of the country during the forecast period.

# Precipitation Anomaly and Exceedance Probability > 25/50 mm

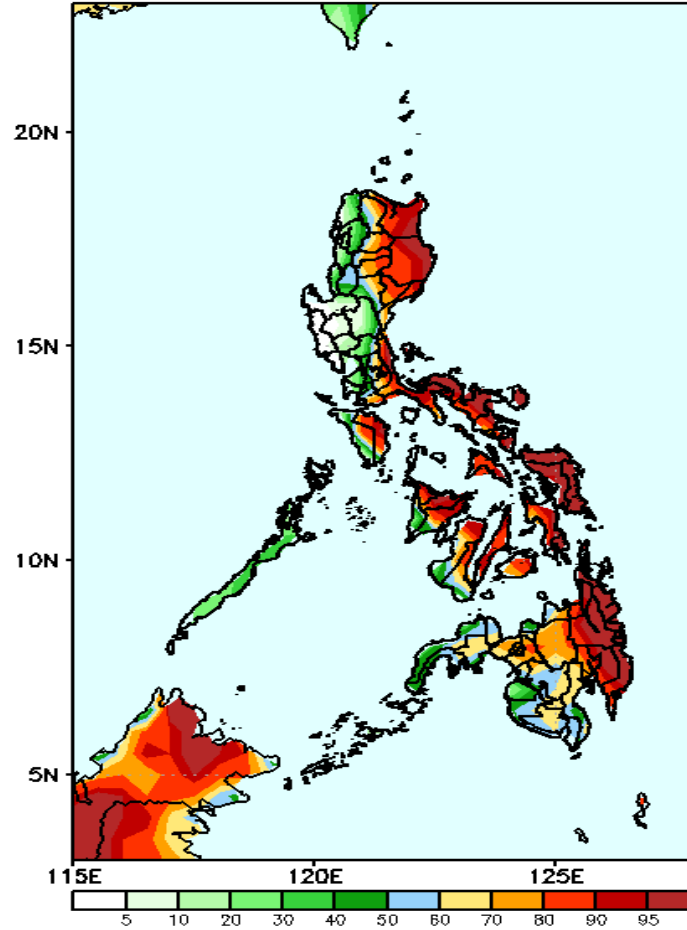
## Week 1: February 4-10, 2021

GEFS Week-1 Precip Anomaly  
Valid: 20210204 - 20210210



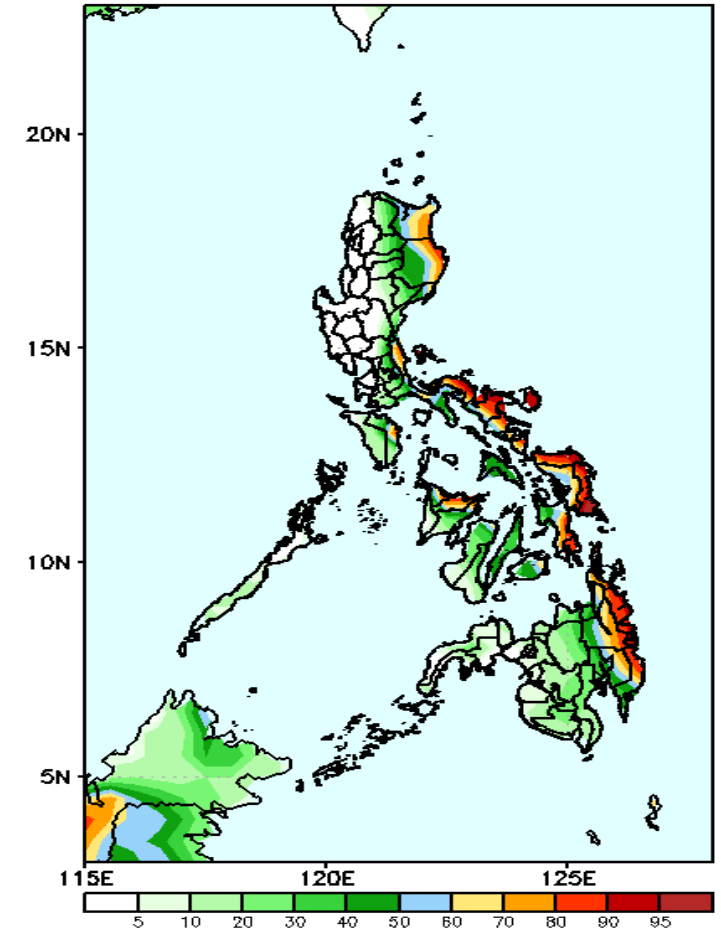
Increase of rainfall of up to 80mm is expected in most parts of southern Luzon, Central Visayas and Davao Region while rainfall deficit of 40-80mm is more likely in the remaining parts of Mindanao.

GEFS Week-1 Exceedance Prob. > 25mm  
Valid: 20210204 - 20210210



High probability of rainfall to exceed 25mm in most parts of the country except in the western parts of Luzon, & Mindanao during the forecast period.

GEFS Week-1 Exceedance Prob. > 50mm  
Valid: 20210204 - 20210210



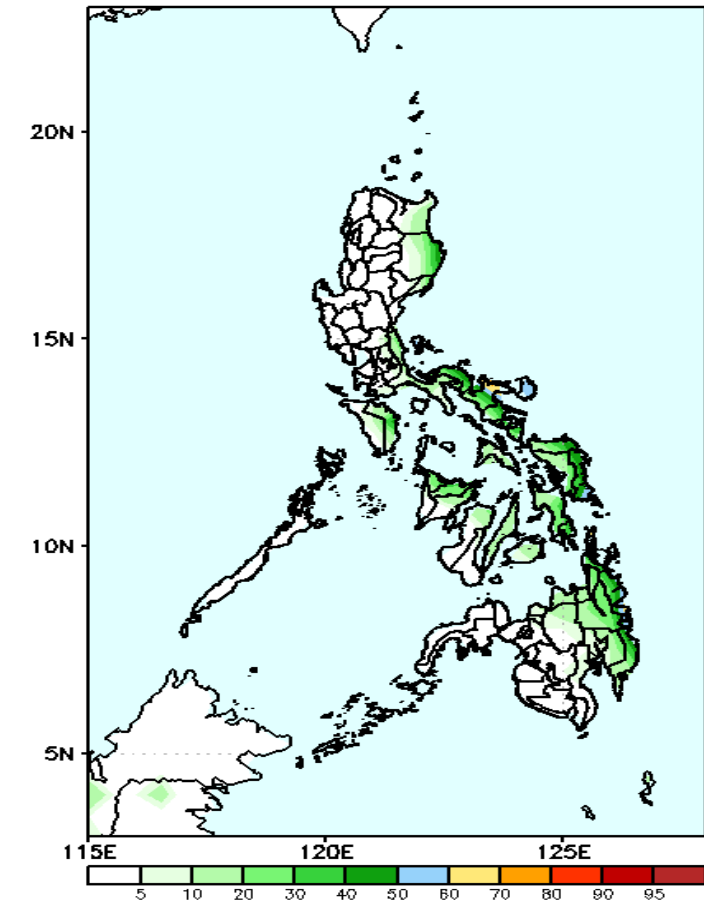
High probability of rainfall to exceed 50mm in the eastern parts of Cagayan & Isabela and in eastern Visayas and Mindanao during the forecast period.



# Exceedance Probability > 100/150/200 mm

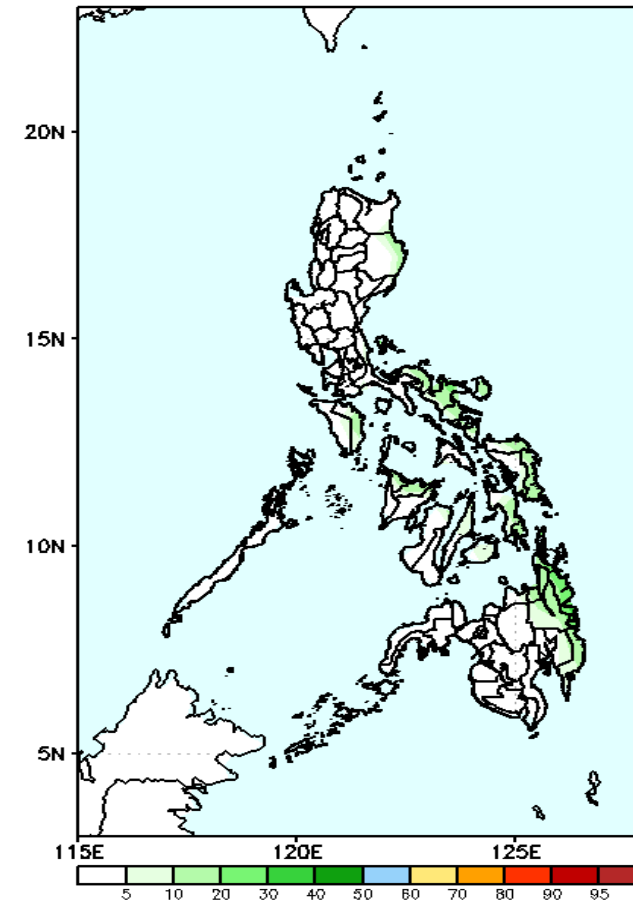
## Week 1: February 4-10, 2021

GEFS Week-1 Exceedance Prob. > 100mm  
Valid: 20210204 - 20210210



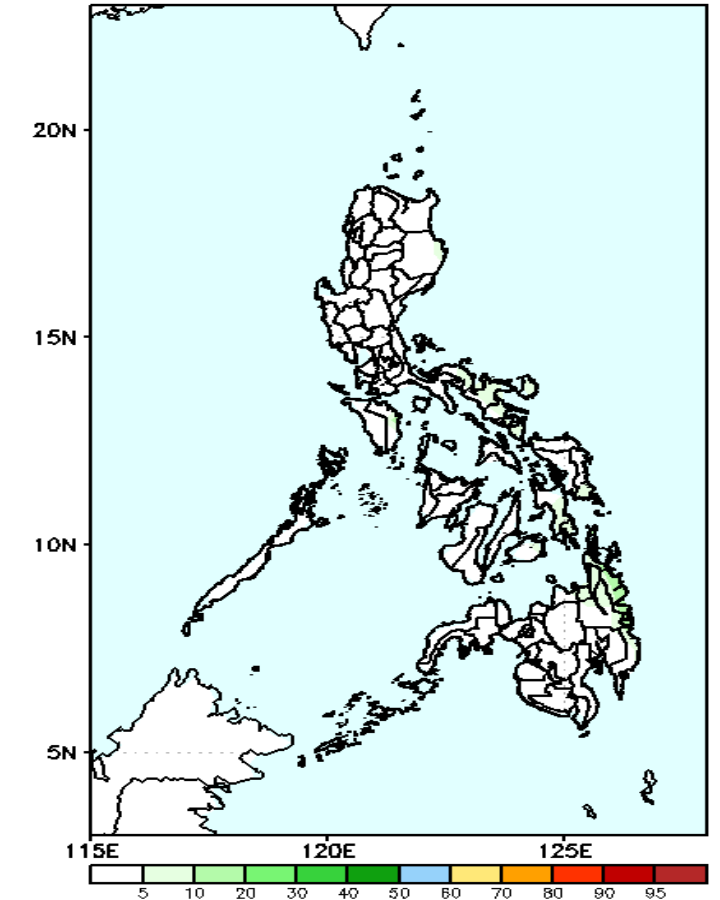
Less probability of rainfall to exceed 100mm in most parts of the country during the forecast period.

GEFS Week-1 Exceedance Prob. > 150mm  
Valid: 20210204 - 20210210



Less probability of rainfall to exceed 150mm in most parts of the country during the forecast period.

GEFS Week-1 Exceedance Prob. > 200mm  
Valid: 20210204 - 20210210



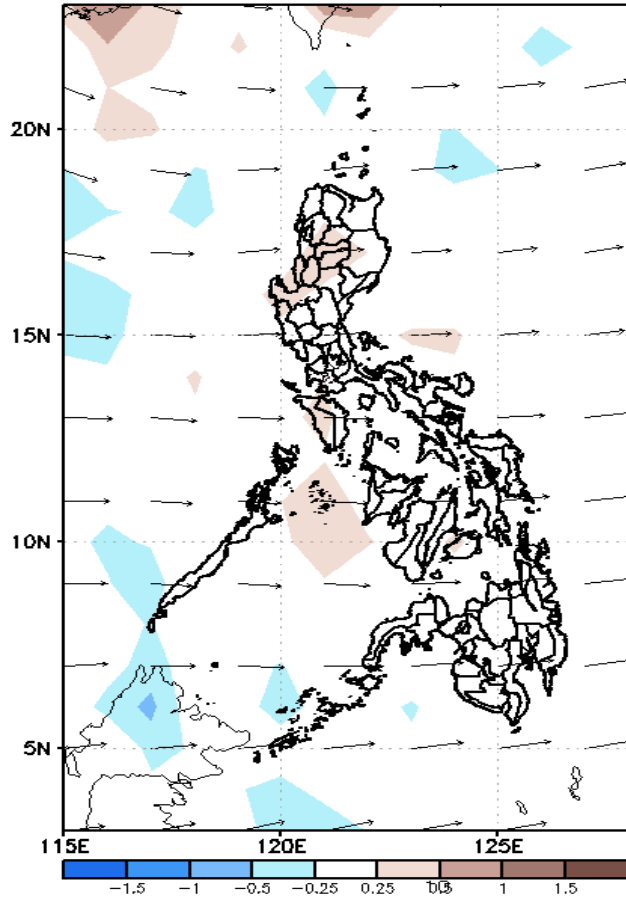
Less probability of rainfall to exceed 200mm in most parts of the country during the forecast period.



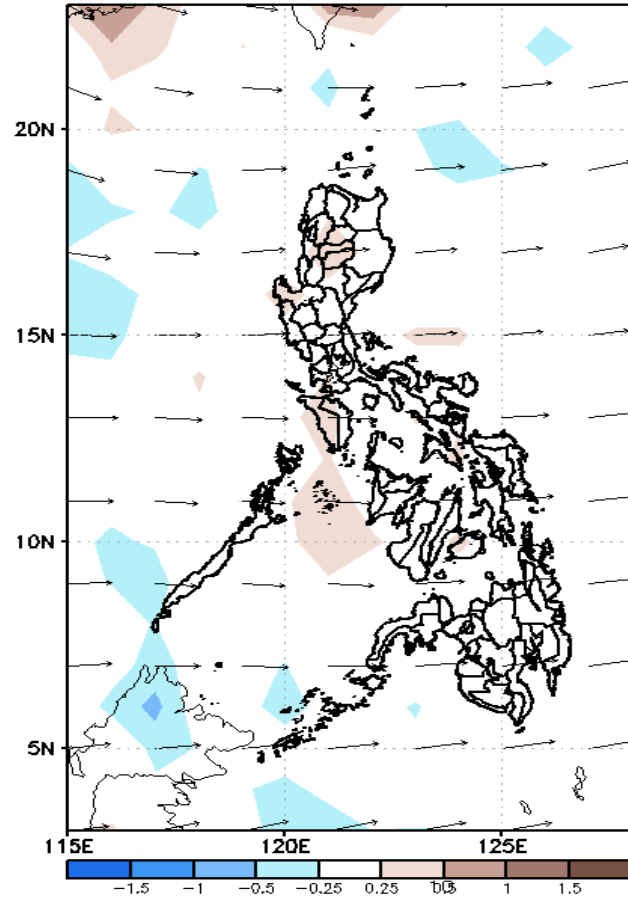
# GEFS Week-2 Forecasts: Divergence & Wind Anomaly

## Week 2: February 4-10, 2021

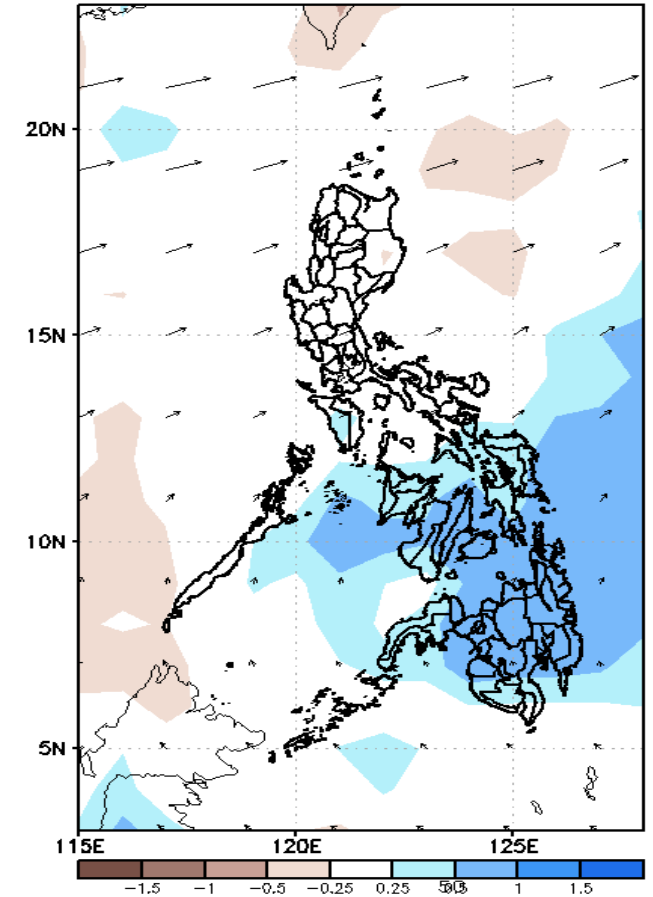
GEFS Week-2 850-hPa Divergence and Wind Anom  
Valid: 20210211 - 20210217



GEFS Week-2 700-hPa Divergence and Wind Anom  
Valid: 20210211 - 20210217



GEFS week-2 200-hPa Divergence and Wind Anom  
Valid: 20210211 - 20210217

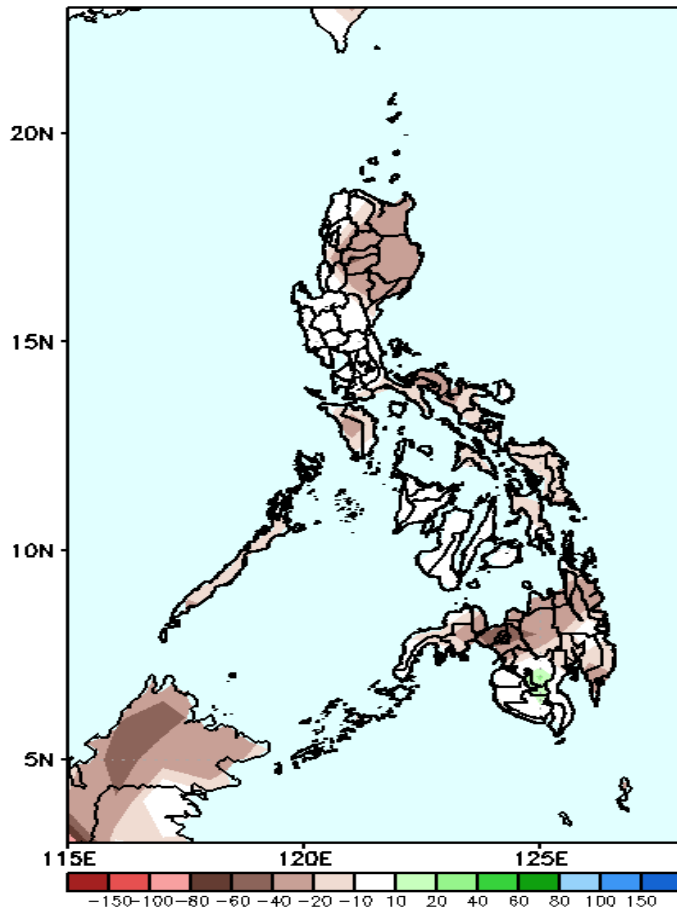


Upper and low level Divergence suggest likelihood of precipitation in most parts of the country. Northeast Monsoon affecting northern and extreme northern Luzon while Easterlies affecting most parts of the country during the forecast period.

# Precipitation Anomaly and Exceedance Probability > 25/50 mm

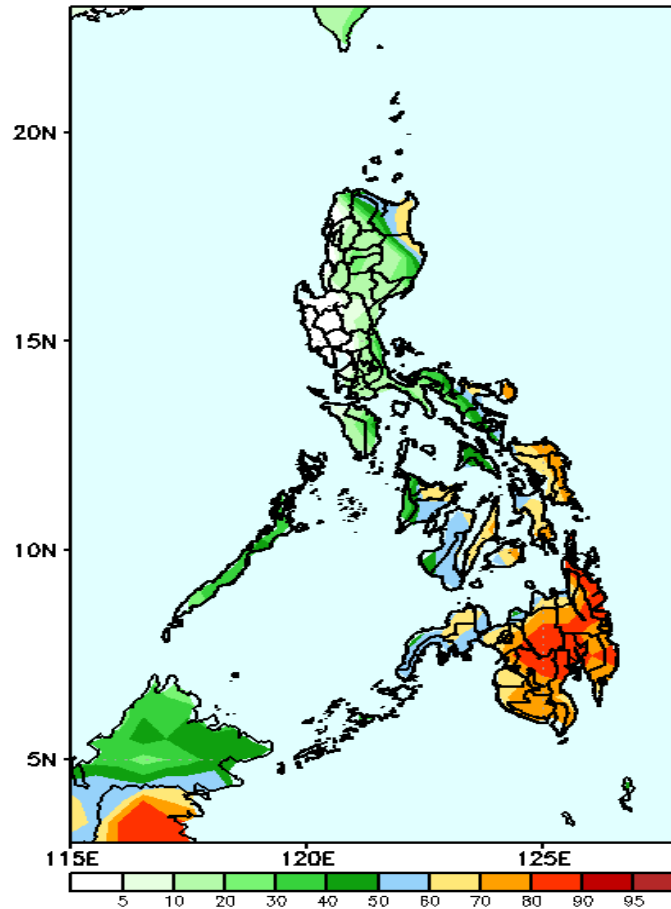
## Week 2: February 11-17, 2021

GEFS Week-2 Precip Anomaly  
Valid: 20210211 - 20210217



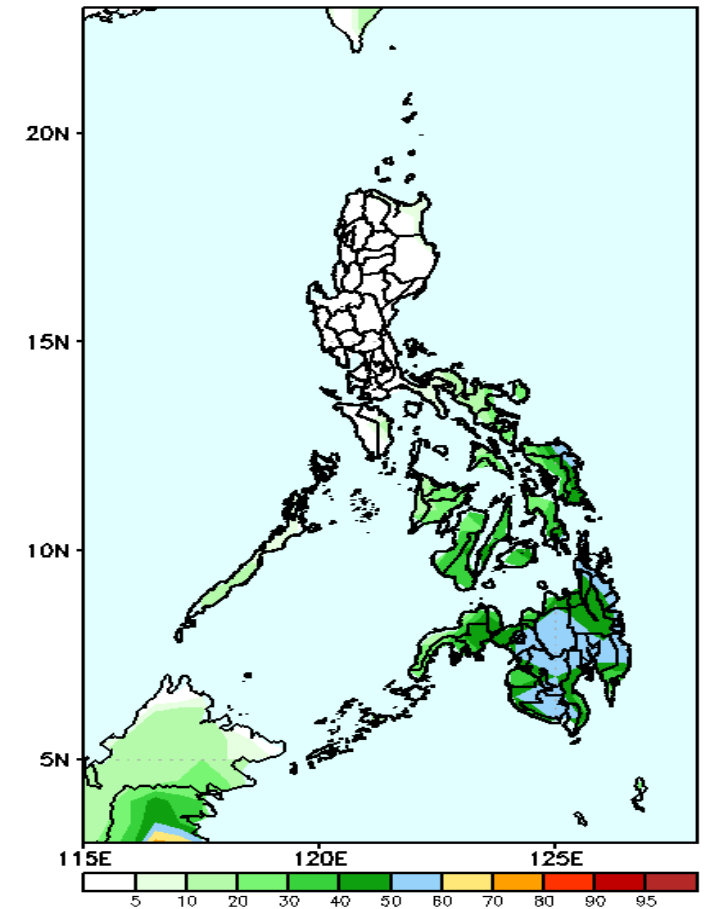
Rainfall deficit of 40-80mm is expected in most parts of Cagayan Valley, Cordillera Region, Southern Luzon, Eastern Visayas and northern Mindanao.

GEFS Week-2 Exceedance Prob. > 25mm  
Valid: 20210211 - 20210217



70-95% probability of rainfall to exceed 25mm in Samar Provinces and most parts of Mindanao while less probability for the rest of the country during the forecast period.

GEFS Week-2 Exceedance Prob. > 50mm  
Valid: 20210211 - 20210217



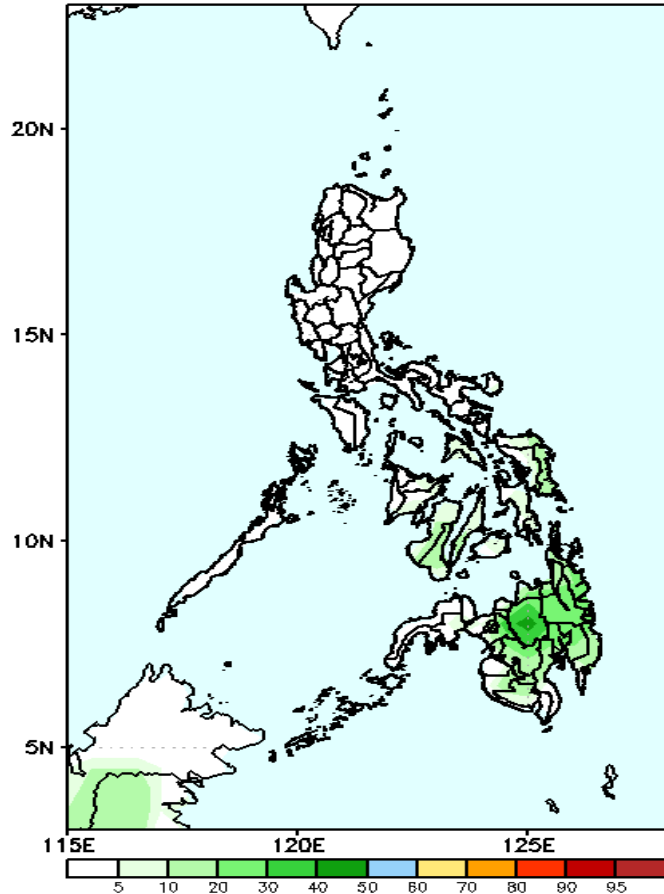
Less probability of rainfall to exceed 50mm in most parts of the country during the forecast period.



# Exceedance Probability > 100/150/200 mm

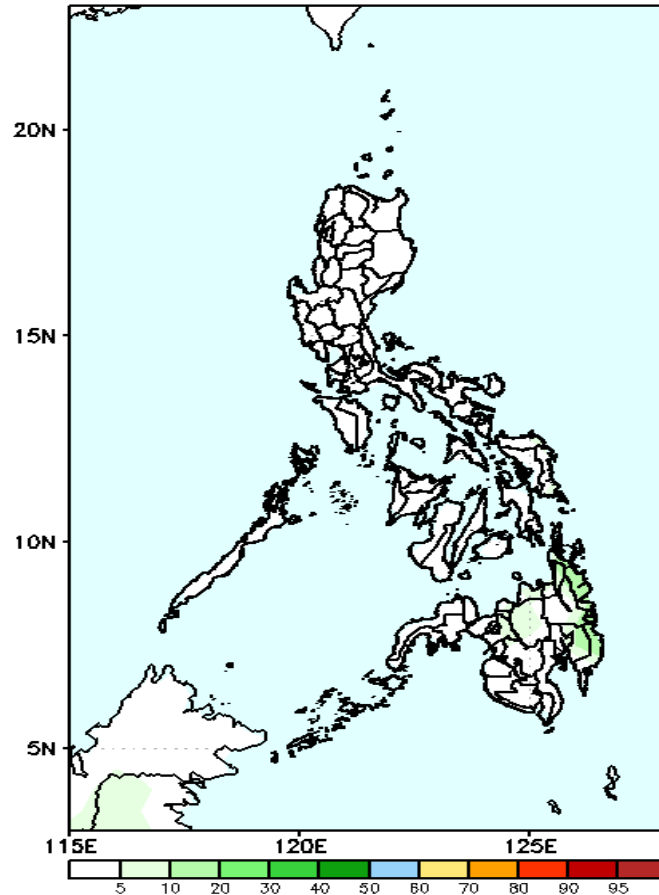
## Week 2: February 11-17, 2021

GEFS Week-2 Exceedance Prob. > 100mm  
Valid: 20210211 - 20210217



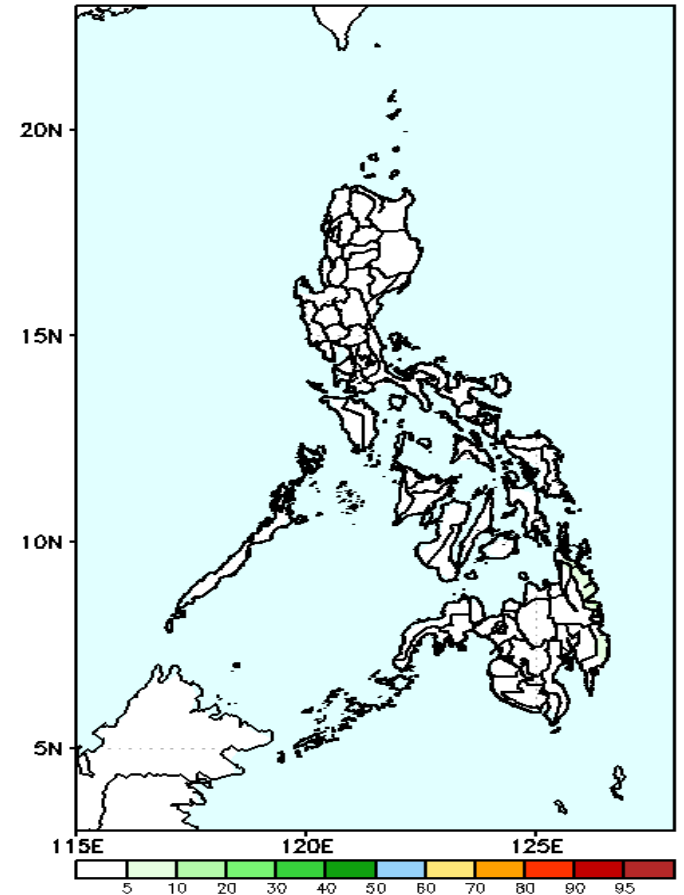
Less probability of rainfall to exceed 100mm in most parts of the country during the forecast period.

GEFS Week-2 Exceedance Prob. > 150mm  
Valid: 20210211 - 20210217



Less probability of rainfall to exceed 150mm in most parts of the country during the forecast period.

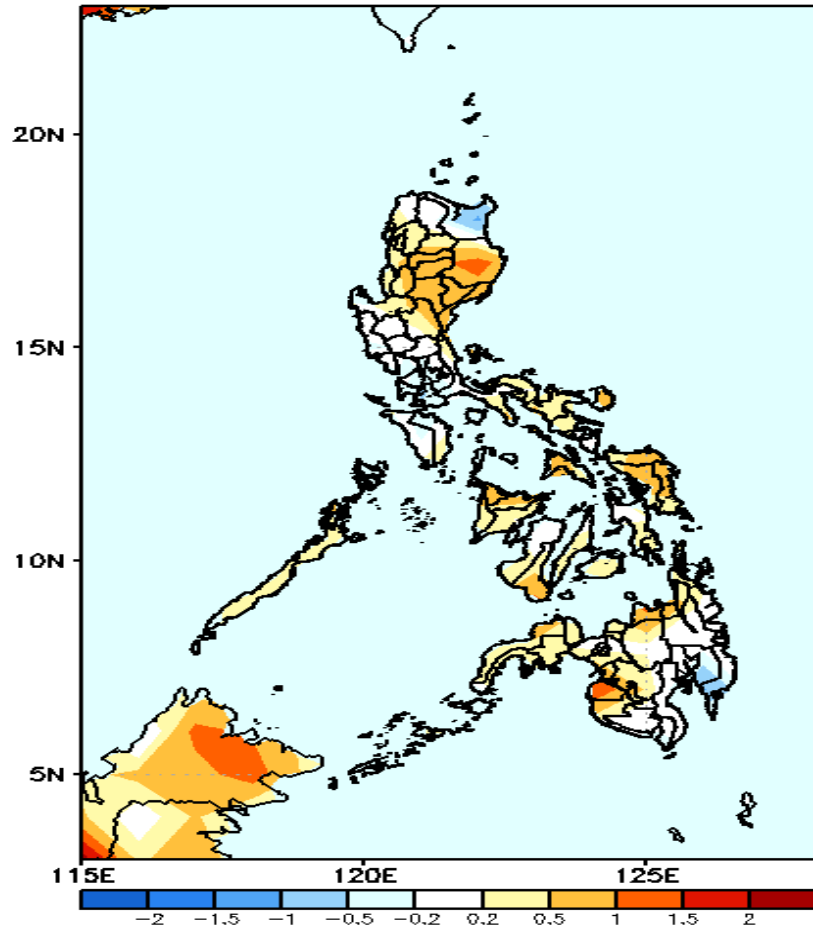
GEFS Week-2 Exceedance Prob. > 200mm  
Valid: 20210211 - 20210217



Less probability of rainfall to exceed 200mm in most parts of the country during the forecast period.

# GEFS Week-1 & 2 Forecasts: T2m Anomaly

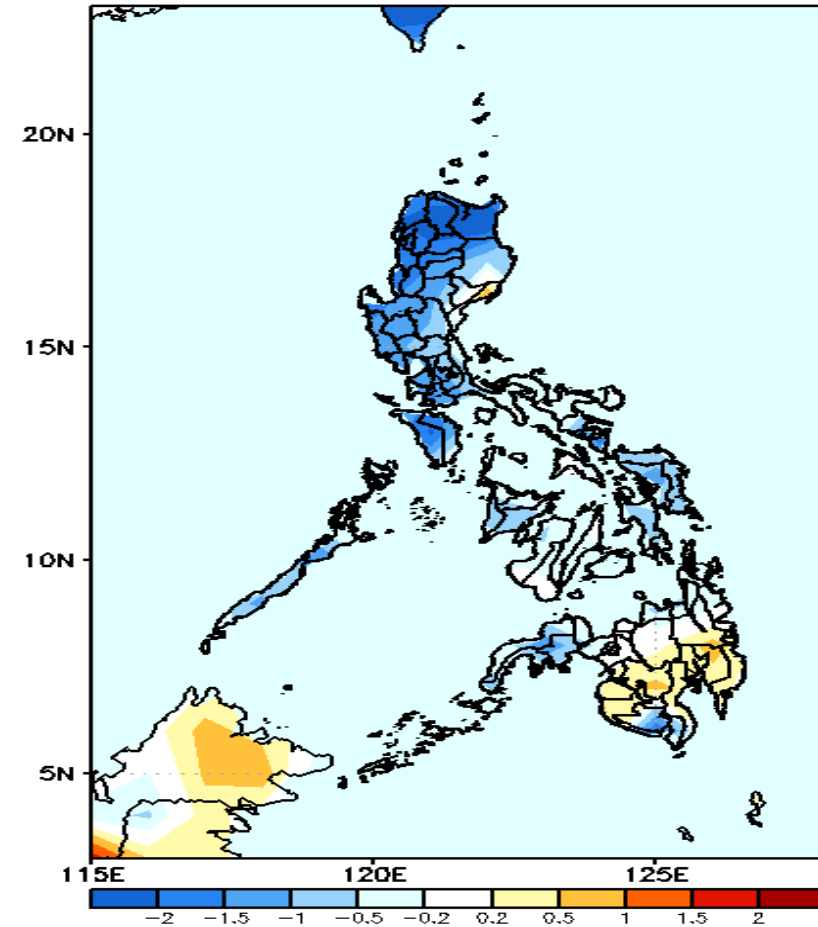
GEFS Week-1 T2m Anomaly  
Valid: 20210204 - 20210210



## 2m Temperature Week 1: February 4-10, 2021

Average to slightly warmer than average surface air temperature is expected in most parts of the country.

GEFS Week-2 T2m Anomaly  
Valid: 20210211 - 20210217



## 2m Temperature Week 2: February 11-17, 2021

Cooler than average surface air temperature is expected in most parts of Luzon and Visayas while average to slightly warmer than average surface air temperature in Mindanao

